

## 150 Watt Solar Panel Kit

**Model No.**  
RS-SPK135

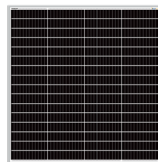
The Redilight 150 Watt Solar Panel Kit includes a high efficiency Monocrystalline PV panel which is mounted on the roof using either tile or metal roof brackets.

The kit includes a 5m length of 2.5mm<sup>2</sup> Twin DC cable to enable a central location in the roof cavity for the termination of light feeds, a junction box is provided.

There is also 20m of twin 1.84mm<sup>2</sup> cable which is used to run from each light back to this junction box.

### Solar Panel

- Nominal - 24VDC
- Voltage max (Vmp) - 36.2v
- Current max (Imp) - 4.15A
- Size: 910 x 880 x 35mm



### Tile Roof

- 4 x tile brackets
- 4 x adjustable end clamps
- 4 x rail lugs
- 12 x 14g 10 TPI Tek screws (buildex screws)



or

### DC Solar Cable

- 20m of 2 core UV protected 1.84mm<sup>2</sup> tinned copper wire
- 5m of 2 core UV protected 4mm<sup>2</sup> tinned copper wire



### Metal Roof

- 4 x aluminium tin brackets
- 4 x adjustable end clamps
- 4 x rail lugs
- 4 x rubber washers
- 1 x rubber flashing
- 4 x 14g 10 TPI Tek screws (buildex screws)



### Mounting Rail

- 2 x 1000mm long rail

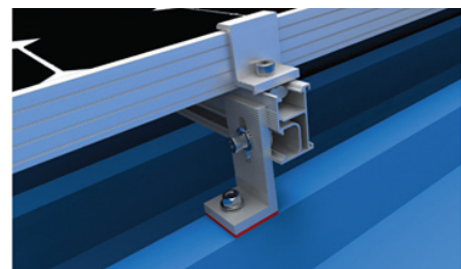


### Notes:

- All holes are to be pre-drilled
- Each tile bracket must have a minimum of 3 screws
- Refer to the Wind Region Table to determine mounting bracket spacing.



Tile roof bracket



Metal roof bracket