



# Installation Sheet

Skyfixture Panel series

## Product Description

Redilight flat Skyfixture panels.

1. Panel sizes available:

- RS-45x45RS5 - Actual overall panel size is 445 x 445mm with a **hole cutout of 420 x 420mm**
- RS-6x6RS5 - Actual overall panel size is 595 x 595mm with a **hole cutout of 570 x 570mm**
- RS-12x3RS5 - Actual overall panel size is 1195 x 295mm with a **hole cutout of 1175 x 270mm**
- RS-9x6RS5 - Actual overall panel size is 895 x 595mm with a **hole cutout of 870 x 570mm**

2. Soft lighting and non-glare surface adopting highly efficient SMD as its illuminate

3. Using progressive circuit design, each set of LED's works independently to avoid single led failure.

4. Anti-EMI, mercury-free, lead-free, compliant with CE and RoHs requirements.

## Product Details

1. This product is suitable for indoor use only.

2. Before use, please confirm the products are intact during transportation.

3. Keep packing materials away from children to prevent any danger of suffocation.

→. Non authorized personnel are not permitted to disassemble or repair any Redilight Products. Redilight has the right to refuse the replacement or warranty service for the unauthorized disassembly or repaired products.

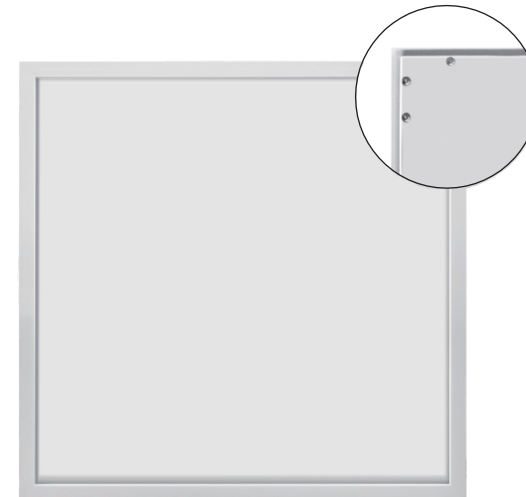
5. Clean with moist cloth, do not use harsh chemicals or corrosive materials for cleaning.

## Applications

Hotel foyers, meeting rooms, offices; residential housing and public facilities, commercial use, schools, hospitals, other lighting.

Dear User:

Thank you for purchasing our products,  
please review to ensure proper  
installation and operation.



# Skyfixture Panel installation options

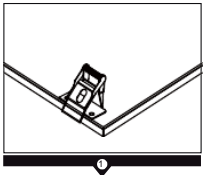
## Note before installation:

1. Always follow electrical wiring standards applicable to your location
2. Once the location of your Skyfixture has been established be sure to clear any electrical cables or debris from where you are about to cut the hole in the ceiling.

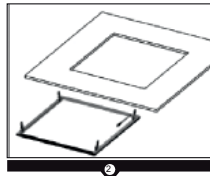
Installation steps are as follows – Choose your Mounting situation.

### ► Recess mounting into ceiling using spring clips

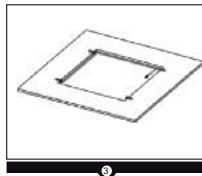
- RS-45x45 - Actual overall panel size is: 445 x 445mm with a hole cutout of 420 x 420mm
- RS-6x6 - Actual overall panel size is: 595 x 595mm with a hole cutout of 570 x 570mm
- RS-12x3 - Actual overall panel size is: 1195 x 295mm with a hole cutout of 1170 x 270mm
- RS-9x6 - Actual overall panel size is: 895 x 595mm with a hole cutout of 870 x 570mm



Fix spring clips provided with screws on opposite sides of each other.

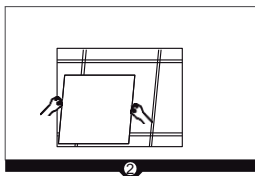


To install into ceiling cutout, Start with one side by pushing spring clips into hole then repeat on the opposite side and push panel up so it snaps up into place flush with the ceiling.

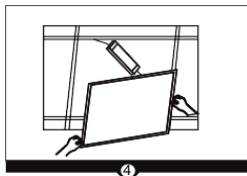


Installation complete

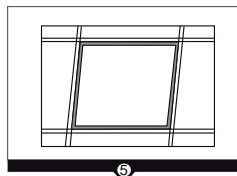
### ► T bar Ceiling Grid installation



Remove ceiling tile from ceiling grid.

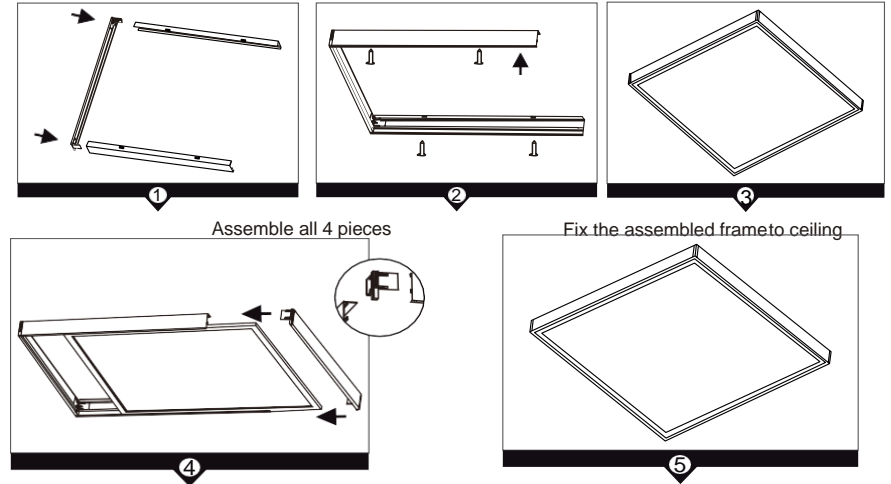


Place Skyfixture into ceiling grid



Installation complete

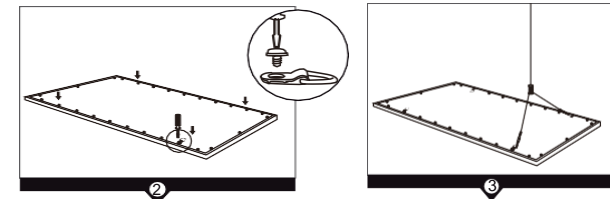
## Surface Mounted Frame



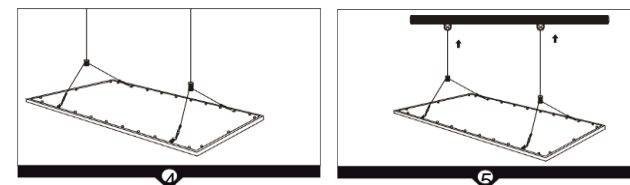
4. Remove one end of frame, slide the Skyfixture panel into frame then reinsert end back to frame.

Installation complete

## Suspension Kits



Mount hooks to back of light panel



Secure wire or cable to a stable structure above