

250 Watt Solar Panel Kit

Product Code:
RS-SPK250

The Redilight 250 Watt Solar Panel Kit includes a high efficiency Monocrystalline PV panel which is mounted on the roof using either tile or metal roof brackets.

The kit includes a 5m length of 4mm² Twin DC cable to enable a central location in the roof cavity for the termination of light feeds, a junction box is provided.

There is also 20m of twin 1.84mm² cable which is used to run from each light back to this junction box.

Solar Panel

- Nominal - 24VDC
- Voltage max (Vmp) - 38.0v
- Current max (Imp) - 6.58A
- Size: 1500 x 880 x 40mm



Tile Roof

- 4 x tile brackets
- 4 x adjustable end clamps
- 4 x rail lugs
- 12 x 14g 10 TPI Tek screws (buildex screws)



or

DC Solar Cable

- 20m of 2 core UV protected 1.84mm² tinned copper wire
- 5m of 2 core UV protected 4mm² tinned copper wire



Metal Roof

- 4 x aluminium tin brackets
- 4 x adjustable end clamps
- 4 x rail lugs
- 4 x rubber washers
- 1 x rubber flashing
- 4 x 14g 10 TPI Tek screws (buildex screws)



Mounting Rail

- 2 x 1100mm long rail

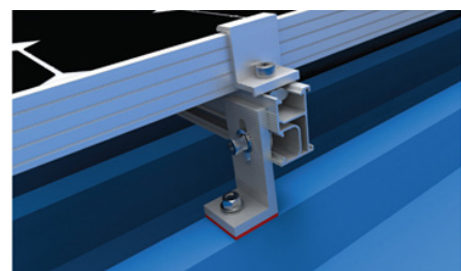


Notes:

- All holes are to be pre-drilled
- Each tile bracket must have a minimum of 3 screws
- Refer to the Wind Region Table to determine mounting bracket spacing.



Tile roof bracket



Metal roof bracket